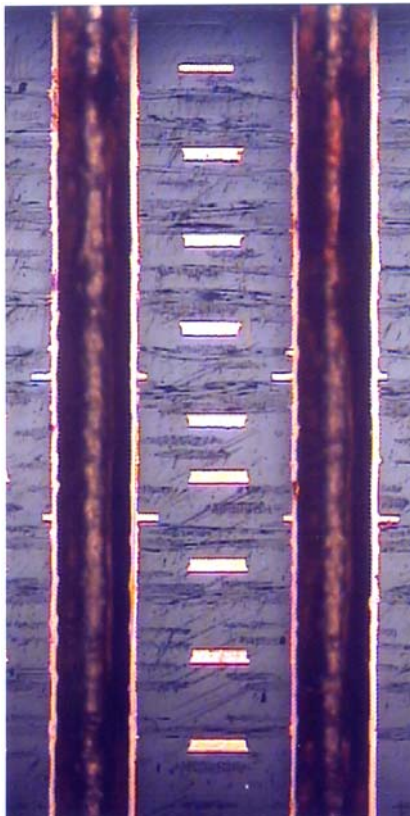


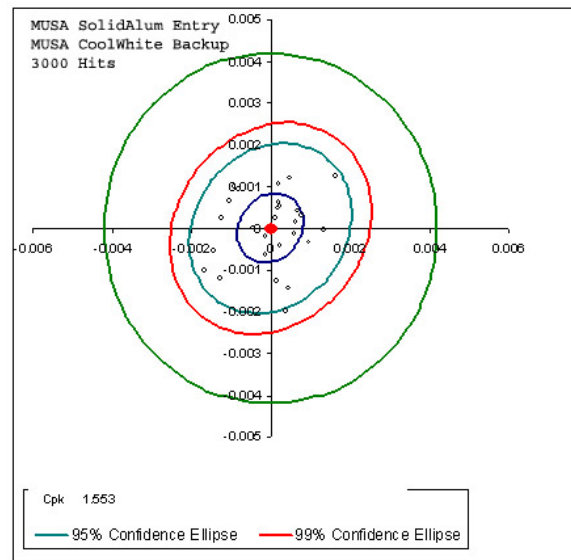
MUSA SOLID ALUMINUM ENTRY .007" / .010"

MUSA Solid Aluminum Entry is available in .007", and .010" thicknesses. It is produced from 99.998% aluminum (highest grade) for specific use as drilling entry material.

Heat dissipation characteristics are excellent, resulting in reduced drill wear and minimizing heat related hole defects.



High-Tg FR4, .190" thick, 18-Layer
Drilled with SR129UC .0120" @ 2000 Hits



MUSA Solid Aluminum Entry offers many advantages for the user :

- 3003 H19 Hardness rating
- Reduces burring as a result of alloy/hardness
- Environmentally friendly – fully recyclable
- Excellent locational accuracy
- Best economical choice

MUSA Solid Aluminum Entry is available in any panel size and any tooling configuration. **MUSA Solid Aluminum Entry** used in conjunction with MUSA Cool White Backup .093 offers the most economical / quality combination of any drilling products.

Rev. 013106